

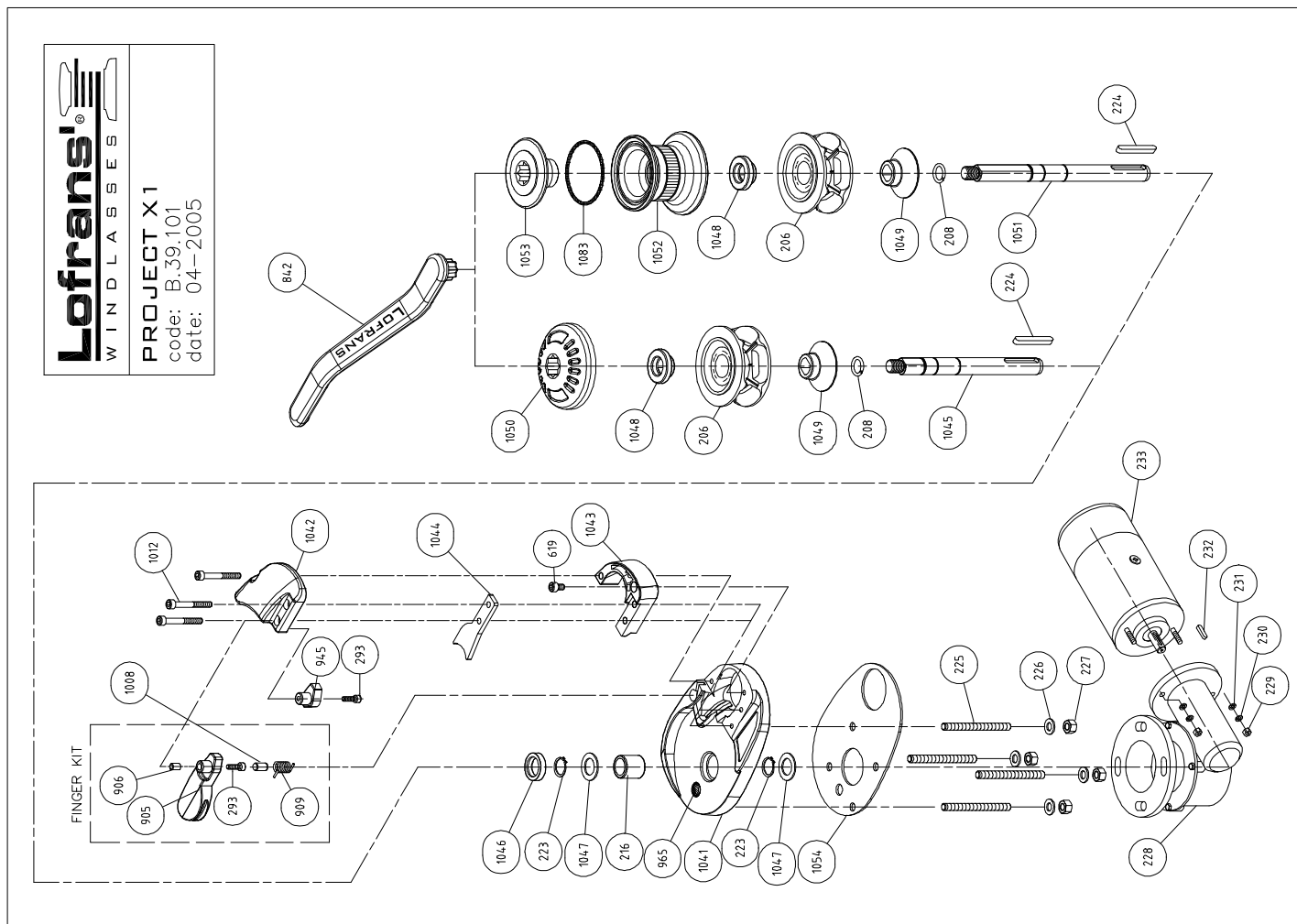
9 LISTA PARTI

9 PART LIST

9 LISTE DE PIECES

9 LISTA PARTI

9 LISTA PARTI



9 LISTA PARTI

9 PART LIST

9 LISTE DE PIECES

9 LISTA PARTI

9 LISTA PARTI

**PROJECT X1**

Item	Description	Kit	Qty	Item	Description	Kit	Qty
206b	Gipsy chain 6 - 5 pockets		1	KA33101	Kit A - Seals		1
206c	Gipsy chain 7 - 6 pockets		1	KB33101	Kit B - Screw&Nuts		1
206d	Gipsy chain 8 - 5 pockets		1	KC04101	Kit C - Keys		1
208	Ring	Kit D	1	KD04101	Kit D - Clips		1
216	Bush		1	KF25102	Kit F - Finger		1
223	Circlep - 18 Din.471	Kit D	2	KS36101	Kit S - Sensor&magnet		1
224	Key - 6x6x45	Kit C	1				
225a	Stud M8x58		4				
226	Washer for M8 screw	Kit B	4				
227	Nut - M8	Kit B	4				
228	Gearbox		1				
229	Nut - M5	Kit B	1				
230	Spring washer for M5 screw	Kit B	2				
231	Washer for M5 screw	Kit B	2				
232	Key - 4x4x15	Kit C	1				
233b	Electric motor 500W 12V		1				
233d	Electric motor 700W 12V		1				
293	Hd cap screw M5x16	Kit F	1				
619	Hd cap screw M6x10	Kit B	1				
842a	Handle		1				
905b	Stainless steel Inge	Kit F	1				
906	Spacer	Kit F	1				
909	Spring	Kit F	1				
945	Cap	Kit F	1				
964	Magnet	Kit S	1				
965	Sensor	Kit S	1				
1008	Pivot 7x14	Kit F	1				
1012	Hd cap screw M6x40	Kit B	3				
1041a	Base		1				
1042a	Cover		1				
1043	Support		1				
1044	Stripper		1				
1045a	Main shaft		1				
1046	Seal 18-30-7	Kit A	1				
1047	Ring		2				
1048	Clutch cone - outer		1				
1049	Clutch cone - inner		1				
1050	Gipsy cap		1				
1051a	Low profile shaft		1				
1052a	Drum		1				
1053	Nut		1				
1054	Gasket		1				
1083	O Ring 3250	Kit A	1				

B.39.101 - Date: 09-2005

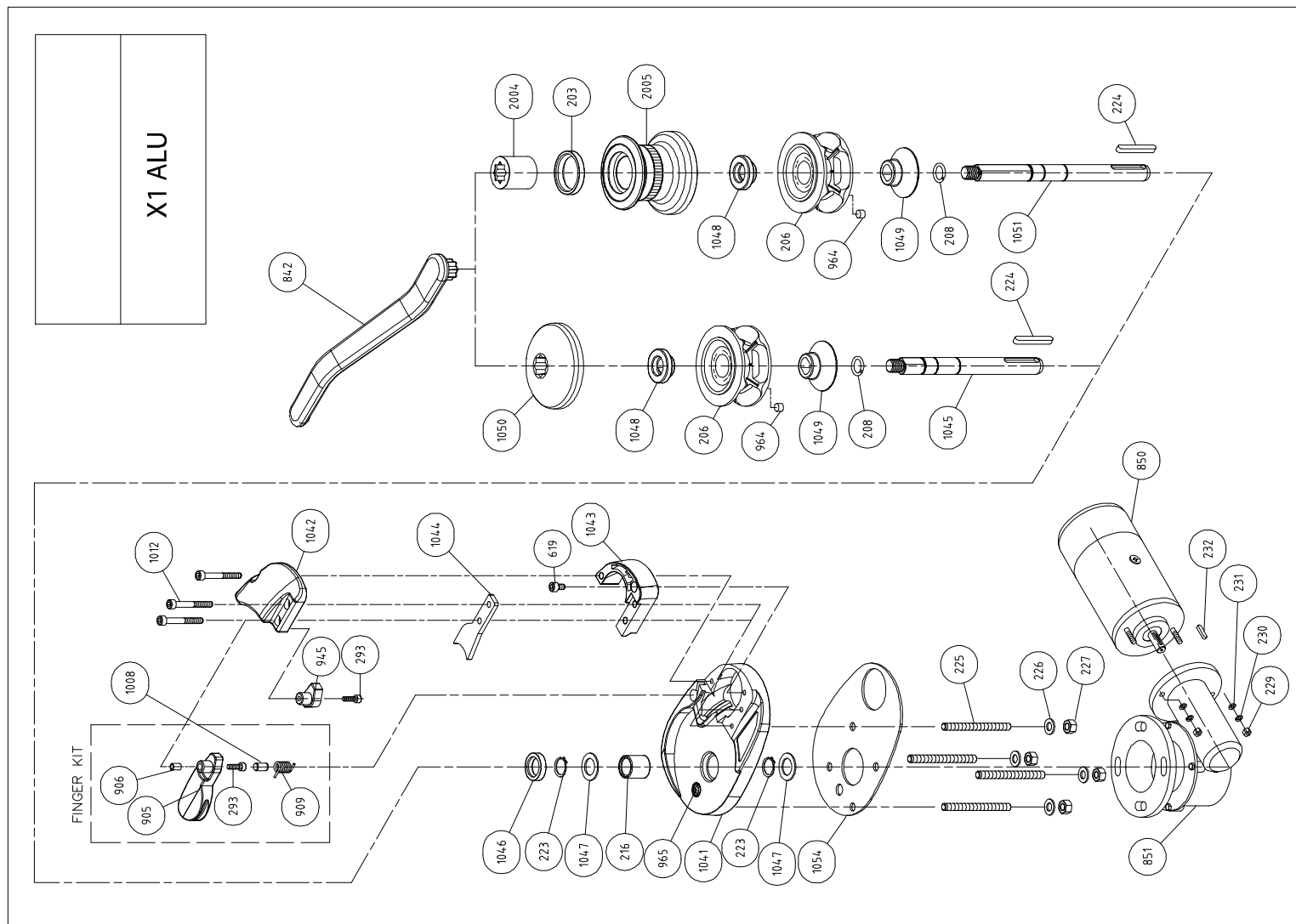
9 LISTA PARTI

9 PART LIST

9 LISTE DE PIECES

9 LISTA PARTI

9 LISTA PARTI



9 LISTA PARTI

9 PART LIST

9 LISTE DE PIECES

9 LISTA PARTI

9 LISTA PARTI

X1 ALU

Item	Description	Kit	Qty	Item	Description	Kit	Qty
203	Seal 35x45x7	Kit A	1	KA42101	Kit A - Seals		1
206b	Gipsy chain 6 - 5 pockets		1	KB33101	Kit B - Screw&Nuts		1
206c	Gipsy chain 7 - 6 pockets		1	KC04101	Kit C - Keys		1
208	Ring	Kit D	1	KD04101	Kit D - Circlips		1
216	Bush		1	KF25101	Kit F - Finger		1
223	Circlip - 18 Din 471	Kit D	2	KS36101	Kit S - Sensor&magnet		1
224	Key - 6x6x45	Kit C	1				
225a	Stud M8x68		4				
226	Washer for M8 screw	Kit B	4				
227	Nut - M8	Kit B	4				
229	Nut - M5	Kit B	2				
230	Spring washer for M5 screw	Kit B	2				
231	Washer for M5 screw	Kit B	2				
232	Key - 4x4x15	Kit C	1				
293	Hd cap screw M5x16	Kit F	1				
619	Hd cap screw M6x10	Kit B	1				
842b	<b>Handle</b>		1				
850	Electric motor 500W 12V		1				
851	Gearbox		1				
905a	Finger	Kit F	1				
906	<b>Spacer</b>	Kit F	1				
909	Spring	Kit F	1				
945	Cap		1				
964	Magnet	Kit S	1				
965	Sensor	Kit S	1				
1008	Pivot 7x14	Kit F	1				
1012	Hd cap screw M6x40	Kit B	3				
1041b	Base		1				
1042b	Cover		1				
1043	Support		1				
1044	Stripper		1				
1045a	Main shaft		1				
1046	Seal 18-30-7	Kit A	1				
1047	Ring		2				
1048	Clutch cone - outer		1				
1049	Clutch cone - inner		1				
1050a	Gipsy cap		1				
1051a	Low profile shaft		1				
1094	Gasket		1				
2004	Clutch nut		1				
2005	Drum		1				